

HIGH SCHOOL BACKGROUND OF FIRST-TIME STUDENTS
UNIVERSITY OF HAWAI'I HONOLULU COMMUNITY COLLEGE
FALL 2001

Institutional Research Office

University of Hawai'i

May 2002

File Reference: Management and Planning Support Folder, Students

Reports available online at: <http://www.hawaii.edu/iro/maps.htm>

Going Rates Into the University of Hawai'i

Figure 11
Total Going Rates - Historical
UH Hilo and Hawai'i CC

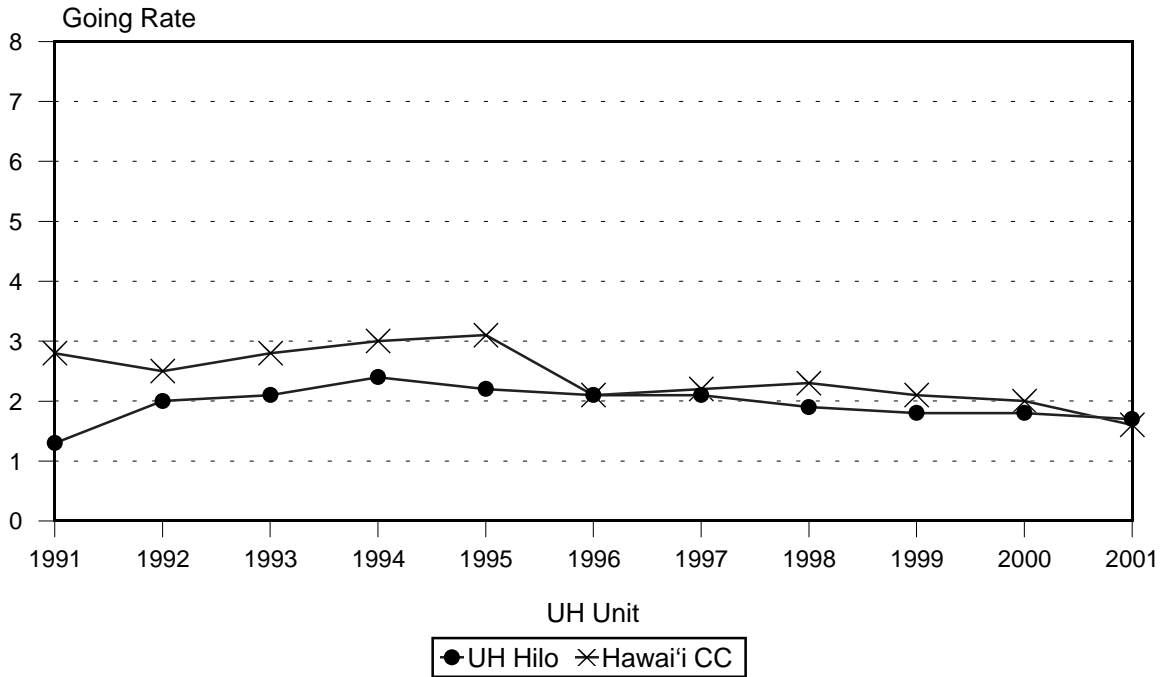


Figure 12
Total Going Rates - Historical
Kapi'olani CC and Honolulu CC

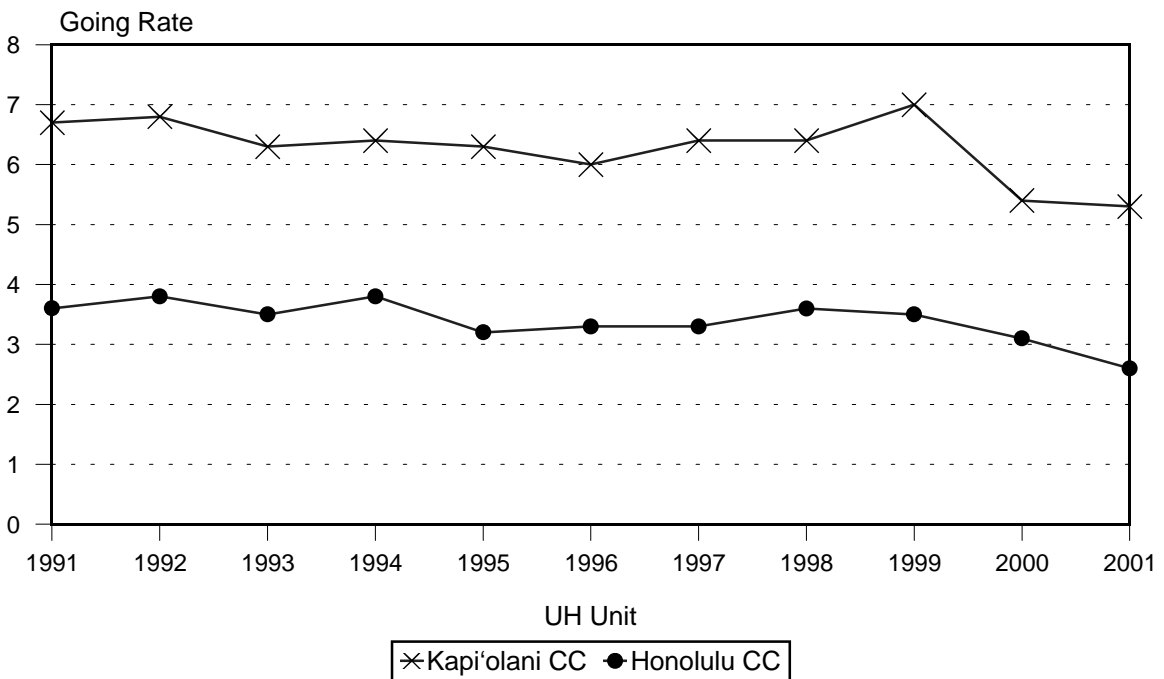


TABLE 1
DISTRIBUTION OF FIRST-TIME STUDENTS BY GEOGRAPHIC LOCATION OF HIGH SCHOOL
UNIVERSITY OF HAWAII, BY CAMPUS
FALL 2001

GEOGRAPHIC LOCATION OF HIGH SCHOOL	TOTAL		UH MANOA 1/		UH HILO 1/		UH COMMUNITY COLLEGES 2/																
	No.	V%	No.	V%	No.	V%	Subtotal No. V%	Hawai'i No. V%	Honolulu No. V%	Kapi'olani No. V%	Kaua'i No. V%	Leeward No. V%	Maui No. V%	Windward No. V%									
TOTAL	7,594	100.0	1,650	100.0	415	100.0	5,529	100.0	562	100.0	925	100.0	1,285	100.0	253	100.0	1,252	100.0	861	100.0	391	100.0	
HAWAII STATE	5,574	73.4	1,290	78.2	236	56.9	4,048	73.2	404	71.9	665	71.9	939	73.1	201	79.4	1,006	80.4	536	62.3	297	76.0	
Public	4,664	61.4	868	52.6	204	49.2	3,592	65.0	375	66.7	576	62.3	790	61.5	187	73.9	922	73.6	491	57.0	251	64.2	
O'ahu, Regular	3,121	41.1	690	41.8	23	5.5	2,408	43.6	25	4.4	520	56.2	681	53.0	6	2.4	899	71.8	35	4.1	242	61.9	
Honolulu	1,045	13.8	284	17.2	5	1.2	756	13.7	5	0.9	216	23.4	467	36.3	3	1.2	44	3.5	10	1.2	11	2.8	
Leeward	1,573	20.7	319	19.3	16	3.9	1,238	22.4	13	2.3	231	25.0	143	11.1	1	0.4	827	66.1	17	2.0	6	1.5	
Windward	503	6.6	87	5.3	2	0.5	414	7.5	7	1.2	73	7.9	71	5.5	2	0.8	28	2.2	8	0.9	225	57.5	
O'ahu, Special	6	0.1					6	0.1			2	0.2	4	0.3									
Hawai'i	647	8.5	75	4.5	150	36.1	422	7.6	336	59.8	14	1.5	44	3.4	3	1.2	9	0.7	13	1.5	3	0.8	
Kaua'i	286	3.8	30	1.8	11	2.7	245	4.4	4	0.7	18	1.9	36	2.8	177	70.0	3	0.2	4	0.5	3	0.8	
Maui County	604	8.0	73	4.4	20	4.8	511	9.2	10	1.8	22	2.4	25	1.9	1	0.4	11	0.9	439	51.0	3	0.8	
Lanai	20	0.3	5	0.3	2	0.5	13	0.2	3	0.5	1	0.1	1	0.1			2	0.2	6	0.7			
Maui	527	6.9	65	3.9	14	3.4	448	8.1	6	1.1	13	1.4	20	1.6	1	0.4	8	0.6	397	46.1	3	0.8	
Moloka'i	57	0.8	3	0.2	4	1.0	50	0.9	1	0.2	8	0.9	4	0.3			1	0.1	36	4.2			
Private	910	12.0	422	25.6	32	7.7	456	8.2	29	5.2	89	9.6	149	11.6	14	5.5	84	6.7	45	5.2	46	11.8	
O'ahu	839	11.0	409	24.8	20	4.8	410	7.4	14	2.5	87	9.4	145	11.3	7	2.8	84	6.7	27	3.1	46	11.8	
Hawai'i	36	0.5	8	0.5	9	2.2	19	0.3	15	2.7	1	0.1	3	0.2									
Kaua'i	9	0.1	1	0.1	1	0.2	7	0.1						7	2.8								
Maui	26	0.3	4	0.2	2	0.5	20	0.4			1	0.1	1	0.1					18	2.1			
OTHER THAN HAWAII	1,517	20.0	340	20.6	177	42.7	1,000	18.1	95	16.9	195	21.1	252	19.6	27	10.7	132	10.5	248	28.8	51	13.0	
U.S. Mainland	1,062	14.0	286	17.3	146	35.2	630	11.4	63	11.2	110	11.9	123	9.6	24	9.5	91	7.3	177	20.6	42	10.7	
U.S. Possessions	60	0.8	20	1.2			40	0.7			21	2.3	16	1.2			1	0.1			2	0.5	
Foreign Countries	395	5.2	34	2.1	31	7.5	330	6.0	32	5.7	64	6.9	113	8.8	3	1.2	40	3.2	71	8.2	7	1.8	
OTHER SPECIAL	483	6.4	16	1.0	2	0.5	465	8.4	63	11.2	65	7.0	87	6.8	25	9.9	109	8.7	74	8.6	42	10.7	
GED 3/	323	4.3	3	0.2	2	0.5	318	5.8	38	6.8	43	4.6	45	3.5	20	7.9	80	6.4	59	6.9	33	8.4	
Hawai'i State (Grad Div)	12	0.2	12	0.7																			
Home Schooler	2	<0.1	1	0.1			1	<0.1			1	0.1											
Not High School Grad	145	1.9					145	2.6	25	4.4	20	2.2	42	3.3	5	2.0	29	2.3	15	1.7	9	2.3	
Youth Challenge Program	1	<0.1					1	<0.1			1	0.1											
NO DATA	20	0.3	4	0.2			16	0.3					7	0.5			5	0.4	3	0.3	1	0.3	

1/ Entering freshmen only.

2/ Includes all regular first-time students; excludes specials (early admits and concurrents).

3/ Students who earned high school diplomas through completion of the General Education Development (GED) examination.

SOURCES: Report 1428, "High School Background of Entering Freshmen," for UH Manoa and UH Hilo;
 Report 2510, "High School Backgrounds of Entering Students," for the UH Community Colleges.

TABLE 2
 FIRST-TIME STUDENTS FROM HAWAI'I HIGH SCHOOLS
 BY YEAR OF HIGH SCHOOL GRADUATION
 UNIVERSITY OF HAWAI'I, BY CAMPUS
 FALL 2001

UH CAMPUS ENTERED	TOTAL	YEAR OF HIGH SCHOOL GRADUATION													
		2001		2000		1999		1998		1997		Before 1997		No Data	
		No.	H%	No.	H%	No.	H%	No.	H%	No.	H%	No.	H%	No.	H%
TOTAL	5,574	4,102	73.6	458	8.2	158	2.8	95	1.7	70	1.3	690	12.4	1	<0.1
UH at Manoa 1/	1,290	1,262	97.8	24	1.9					1	0.1	2	0.2	1	0.1
UH at Hilo 1/	236	216	91.5	12	5.1	1	0.4	2	0.8	2	0.8	3	1.3		
Community Colleges 2/	4,048	2,624	64.8	422	10.4	157	3.9	93	2.3	67	1.7	685	16.9		
Hawai'i CC	404	204	50.5	45	11.1	19	4.7	9	2.2	14	3.5	113	28.0		
Honolulu CC	665	338	50.8	74	11.1	27	4.1	16	2.4	12	1.8	198	29.8		
Kapi'olani CC	939	686	73.1	101	10.8	30	3.2	19	2.0	16	1.7	87	9.3		
Kaua'i CC	201	145	72.1	16	8.0	7	3.5	2	1.0	2	1.0	29	14.4		
Leeward CC	1,006	767	76.2	94	9.3	36	3.6	23	2.3	7	0.7	79	7.9		
Maui CC	536	276	51.5	62	11.6	25	4.7	16	3.0	14	2.6	143	26.7		
Windard CC	297	208	70.0	30	10.1	13	4.4	8	2.7	2	0.7	36	12.1		

1/ Entering freshmen only.

2/ Includes all regular first-time students; excludes specials (early admits and concurrents).

SOURCES: Report 1428, "High School Backgrounds of Entering Freshmen," for UH Manoa and UH Hilo;
 Report 2510, "High School Backgrounds of Entering Students," for the UH Community Colleges.

TABLE 3
 JUNE 2001 HAWAII HIGH SCHOOL GRADUATES ENTERING THE UNIVERSITY OF HAWAII
 BY HIGH SCHOOL DISTRICT AND HIGH SCHOOL
 UNIVERSITY OF HAWAII, BY CAMPUS
 FALL 2001

DISTRICT AND SCHOOL	JUNE		TOTAL		UH at		UH at		UH COMMUNITY COLLEGES 3/														
	2001 HIGH SCHOOL GRADS 1/	UH SYSTEM		MANOA 2/	UH at	HILO 2/	SUBTOTAL	Hawaii		Honolulu		Kapi'olani		Kaua'i		Leeward		Maui		Windward			
		No.	Going					No.	Going	No.	Rate	No.	Rate	No.	Rate	No.	Rate	No.	Rate	No.	Rate	No.	Rate
TOTAL	12,945	4,102	31.7	1,262	9.7	216	1.7	2,624	20.3	204	1.6	338	2.6	686	5.3	145	1.1	767	5.9	276	2.1	208	1.6
PUBLIC SCHOOLS	10,330	3,369	32.6	846	8.2	185	1.8	2,338	22.6	194	1.9	305	3.0	571	5.5	137	1.3	698	6.8	262	2.5	171	1.7
O'ahu, Regular	6,591	2,334	35.4	672	10.2	22	0.3	1,640	24.9	3	<0.1	282	4.3	496	7.5			684	10.4	7	0.1	168	2.5
Honolulu	1,827	769	42.1	278	15.2	5	0.3	486	26.6			116	6.3	351	19.2			14	0.8	1	0.1	4	0.2
Anuenue	4	3	75.0	2	50.0			1	25.0			1	25.0										
Farrington	393	102	26.0	18	4.6	2	0.5	82	20.9			40	10.2	33	8.4			7	1.8			2	0.5
Kaimuki	234	107	45.7	36	15.4			71	30.3			9	3.8	60	25.6			2	0.9				
Kaiser	271	102	37.6	54	19.9	1	0.4	47	17.3			2	0.7	45	16.6								
Kalani	237	134	56.5	52	21.9			82	34.6			6	2.5	76	32.1								
McKinley	386	162	42.0	55	14.2			107	27.7			37	9.6	68	17.6			1	0.3	1	0.3		
Roosevelt	302	159	52.6	61	20.2	2	0.7	96	31.8			21	7.0	69	22.8			4	1.3			2	0.7
Leeward	3,672	1,214	33.1	308	8.4	15	0.4	891	24.3			134	3.6	101	2.8			652	17.8	3	0.1	1	<0.1
Central	1,879	681	36.2	185	9.8	10	0.5	486	25.9			79	4.2	61	3.2			345	18.4	1	0.1		
Aiea	323	147	45.5	41	12.7	2	0.6	104	32.2			15	4.6	25	7.7			63	19.5	1	0.3		
Leilehua	357	87	24.4	10	2.8	4	1.1	73	20.4			15	4.2	1	0.3			57	16.0				
Mililani	456	183	40.1	50	11.0	3	0.7	130	28.5			13	2.9	5	1.1			112	24.6				
Moanalua	388	159	41.0	66	17.0			93	24.0			25	6.4	22	5.7			46	11.9				
Radford	258	68	26.4	12	4.7			56	21.7			10	3.9	6	2.3			40	15.5				
Waiialua	97	37	38.1	6	6.2	1	1.0	30	30.9			1	1.0	2	2.1			27	27.8				
Leeward	1,793	533	29.7	123	6.9	5	0.3	405	22.6			55	3.1	40	2.2			307	17.1	2	0.1	1	0.1
Campbell	436	108	24.8	14	3.2	3	0.7	91	20.9			12	2.8	11	2.5			68	15.6				
Nanakuli	158	22	13.9	4	2.5			18	11.4			1	0.6	2	1.3			15	9.5				
Pearl City	423	204	48.2	63	14.9	1	0.2	140	33.1			11	2.6	14	3.3			114	27.0			1	0.2
Waianae	348	71	20.4	17	4.9	1	0.3	53	15.2			9	2.6	1	0.3			42	12.1	1	0.3		
Waipahu	428	128	29.9	25	5.8			103	24.1			22	5.1	12	2.8			68	15.9	1	0.2		
Windward	1,092	351	32.1	86	7.9	2	0.2	263	24.1	3	0.3	32	2.9	44	4.0			18	1.6	3	0.3	163	14.9
Castle	379	156	41.2	38	10.0			118	31.1			15	4.0	22	5.8			2	0.5			79	20.8
Kahuku	253	48	19.0	14	5.5	1	0.4	33	13.0	1	0.4	3	1.2	1	0.4			11	4.3			17	6.7
Kailua	220	74	33.6	22	10.0	1	0.5	51	23.2	2	0.9	6	2.7	15	6.8			3	1.4	3	1.4	22	10.0
Kalaheo	240	73	30.4	12	5.0			61	25.4			8	3.3	6	2.5			2	0.8			45	18.8
O'ahu, Special	10	3	30.0					3	30.0					3	30.0								
Hawaii Center for Deaf & Blind	7	3	42.9					3	42.9					3	42.9								
Olomana	3																						
Neighbor Islands	3,729	1,030	27.6	174	4.7	163	4.4	693	18.6	190	5.1	23	0.6	72	1.9	137	3.7	14	0.4	254	6.8	3	0.1
Hawaii	1,661	440	26.5	73	4.4	134	8.1	233	14.0	183	11.0	6	0.4	27	1.6	3	0.2	7	0.4	6	0.4	1	0.1
Hilo	348	94	27.0	13	3.7	29	8.3	52	14.9	47	13.5	2	0.6					1	0.3	2	0.6		
Honoka'a	121	31	25.6	3	2.5	12	9.9	16	13.2	15	12.4	1	0.8										
Kanu O Ka Aina Charter 4/	4	1	25.0			1	25.0																
Ka'u	71	19	26.8	1	1.4	6	8.5	12	16.9	10	14.1									2	2.8		
Kealahou 4/	262	45	17.2	8	3.1	13	5.0	24	9.2	18	6.9			3	1.1			2	0.8			1	0.4
Kohala	72	16	22.2	2	2.8	7	9.7	7	9.7	5	6.9									2	2.8		
Kona Waena	161	44	27.3	14	8.7	3	1.9	27	16.8	15	9.3	1	0.6	8	5.0			3	1.9				
Laupahoehoe	19	5	26.3	2	10.5	2	10.5	3	15.8	1	5.3			2	10.5								
Pahoa	123	41	33.3	6	4.9	12	9.8	23	18.7	15	12.2	1	0.8	6	4.9	1	0.8						

TABLE 3 (cont.)

DISTRICT AND SCHOOL	JUNE 2001 HIGH SCHOOL GRADS 1/	TOTAL		UH at		UH at		UH COMMUNITY COLLEGES 3/															
		UH SYSTEM Going No. Rate		MANOA 2/ Going No. Rate		HILO 2/ Going No. Rate		SUBTOTAL Going No. Rate		Hawai'i Going No. Rate		Honolulu Going No. Rate		Kapi'olani Going No. Rate		Kaua'i Going No. Rate		Leeward Going No. Rate		Maui Going No. Rate		Windward Going No. Rate	
		No.	Rate	No.	Rate	No.	Rate	No.	Rate	No.	Rate	No.	Rate	No.	Rate	No.	Rate	No.	Rate	No.	Rate	No.	Rate
Waiakea	462	144	31.2	26	5.6	49	10.6	69	14.9	57	12.3	1	0.2	8	1.7	2	0.4	1	0.2				
Waters of Life 4/	3																						
W. HI. Expl Academy 4/	15																						
Maui County	1,355	375	27.7	71	5.2	18	1.3	286	21.1	6	0.4	11	0.8	17	1.3			6	0.4	245	18.1	1	0.1
Baldwin	352	105	29.8	18	5.1	6	1.7	81	23.0	1	0.3			2	0.6			2	0.6	75	21.3	1	0.3
Hana	26	3	11.5					3	11.5					2	7.7					1	3.8		
King Kekaulike	272	73	26.8	18	6.6	1	0.4	54	19.9											54	19.9		
Lahaina Luna	176	29	16.5	5	2.8	1	0.6	23	13.1	1	0.6			2	1.1					20	11.4		
Lana'i	52	16	30.8	5	9.6	2	3.8	9	17.3	2	3.8	1	1.9					2	3.8	4	7.7		
Maui	372	124	33.3	22	5.9	4	1.1	98	26.3	1	0.3	5	1.3	8	2.2			2	0.5	82	22.0		
Moloka'i	105	25	23.8	3	2.9	4	3.8	18	17.1	1	1.0	5	4.8	3	2.9					9	8.6		
Kaua'i	713	215	30.2	30	4.2	11	1.5	174	24.4	1	0.1	6	0.8	28	3.9	134	18.8	1	0.1	3	0.4	1	0.1
Kapa'a	238	58	24.4	9	3.8	3	1.3	46	19.3	1	0.4	1	0.4	15	6.3	28	11.8			1	0.4		
Kaua'i	285	100	35.1	15	5.3	4	1.4	81	28.4			4	1.4	3	1.1	72	25.3			1	0.4	1	0.4
Ni'ihau	3																						
Waimea	187	57	30.5	6	3.2	4	2.1	47	25.1			1	0.5	10	5.3	34	18.2	1	0.5	1	0.5		
Unknown / Miscoded	NA	2	NA					2	NA	1	NA									1	NA		
PRIVATE SCHOOLS	2,615	733	28.0	416	15.9	31	1.2	286	10.9	10	0.4	33	1.3	115	4.4	8	0.3	69	2.6	14	0.5	37	1.4
O'ahu	2,286	691	30.2	403	17.6	19	0.8	269	11.8	3	0.1	33	1.4	113	4.9	4	0.2	69	3.0	10	0.4	37	1.6
Academy of the Pacific	32	9	28.1					9	28.1					5	15.6			2	6.3			2	6.3
ASSETS School	10	4	40.0					4	40.0					1	10.0			3	30.0				
Damien	97	42	43.3	19	19.6	1	1.0	22	22.7	1	1.0	6	6.2	9	9.3			3	3.1			3	3.1
Hale O Ulu School	15																						
Hanalani	29	11	37.9	7	24.1			4	13.8					1	3.4			3	10.3				
Hawai'i Baptist Academy	101	44	43.6	38	37.6			6	5.9					4	4.0			1	1.0			1	1.0
Hawaiian Mission Academy	45	16	35.6	2	4.4			14	31.1			5	11.1	6	13.3			1	2.2	1	2.2	1	2.2
Ho'ala School 5/	4	1	25.0					1	25.0									1	25.0				
Honolulu Waldorf School	9	2	22.2					2	22.2					2	22.2								
Iolani	220	39	17.7	34	15.5	3	1.4	2	0.9					1	0.5			1	0.5				
Kailua Christian Academy	5	3	60.0					3	60.0					1	20.0							2	40.0
Kamehameha	430	157	36.5	88	20.5	13	3.0	56	13.0	2	0.5	4	0.9	16	3.7	1	0.2	18	4.2	7	1.6	8	1.9
Koolau Baptist	7	2	28.6					2	28.6			1	14.3									1	14.3
La Pietra (HI School for Girls) ..	43	5	11.6	4	9.3			1	2.3					1	2.3								
Lanakila Baptist	18	4	22.2	2	11.1			2	11.1			1	5.6					1	5.6				
Lutheran High Sch Hawai'i	35	26	74.3	16	45.7			10	28.6			1	2.9	4	11.4			2	5.7			3	8.6
Maile Bible	4	1	25.0					1	25.0					1	25.0								
Maryknoll	130	54	41.5	32	24.6	1	0.8	21	16.2			2	1.5	15	11.5			4	3.1				
Mid-Pacific Institute	184	49	26.6	32	17.4			17	9.2			1	0.5	10	5.4			6	3.3				
Punahou	415	46	11.1	37	8.9			9	2.2			1	0.2	6	1.4			2	0.5				
Redemption Academy	6	3	50.0					3	50.0									1	16.7			2	33.3
Sacred Hearts Academy	118	43	36.4	25	21.2	1	0.8	17	14.4			1	0.8	7	5.9			7	5.9			2	1.7
Saint Andrew's Priory	31	10	32.3	5	16.1			5	16.1			1	3.2					1	3.2	2	6.5	1	3.2
Saint Francis	80	35	43.8	21	26.3			14	17.5			2	2.5	3	3.8	3	3.8	4	5.0			2	2.5
Saint Louis	142	58	40.8	26	18.3			32	22.5			5	3.5	15	10.6			6	4.2			6	4.2
University	48	19	39.6	15	31.3			4	8.3			1	2.1	2	4.2			1	2.1				
Varsity	28	8	28.6					8	28.6			1	3.6	3	10.7			1	3.6			3	10.7

TABLE 3 (cont.)

DISTRICT AND SCHOOL	JUNE 2001 HIGH SCHOOL GRADS 1/	TOTAL		UH at		UH at		UH COMMUNITY COLLEGES 3/						
		UH SYSTEM Going No. Rate	MANOA 2/ Going No. Rate	HILO 2/ Going No. Rate	SUBTOTAL Going No. Rate	Hawai'i Going No. Rate	Honolulu Going No. Rate	Kapi'olani Going No. Rate	Kaua'i Going No. Rate	Leeward Going No. Rate	Maui Going No. Rate	Windward Going No. Rate		
Hawai'i	168	25 14.9	8 4.8	9 5.4	8 4.8	7 4.2		1 0.6						
Christian Liberty	9	2 22.2	1 11.1	1 11.1										
Hawai'i Prep Academy	87	7 8.0	7 8.0											
Makua Lani Christian	10													
Parker	18	2 11.1		1 5.6	1 5.6	1 5.6								
Saint Joseph	44	14 31.8		7 15.9	7 15.9	6 13.6		1 2.3						
Maui County	138	11 8.0	4 2.9	2 1.4	5 3.6			1 0.7			4 2.9			
Ka'ahumanu Hou Christian	18	2 11.1			2 11.1						2 11.1			
Molokai Christian Acad	3													
Saint Anthony	63	5 7.9	2 3.2		3 4.8			1 1.6			2 3.2			
Seabury Hall	54	4 7.4	2 3.7	2 3.7										
Kaua'i	23	5 21.7	1 4.3		4 17.4				4 17.4					
Island School 5/	6	1 16.7			1 16.7				1 16.7					
Kahili Adventist School	4	3 75.0			3 75.0				3 75.0					
Kula High School 5/	13	1 7.7	1 7.7											
Unknown / Miscoded	NA	1 NA		1 NA										

1/ Excludes home schoolers and students who earned high school diplomas through the General Education Development (GED) examination.

2/ Entering freshmen only.

3/ Includes all regular first-time students; excludes specials (early admits and concurrents).

4/ First graduating class June 2001.

5/ First graduating class June 2000.

Note: The "going rate" is the percentage of high school graduates from the State of Hawai'i entering the University of Hawai'i campuses in the fall semester immediately following graduation from high school.

SOURCES: UH Report 1428B, "Details of Hawai'i High School Backgrounds," for UH Manoa and UH Hilo; report 2510B, "Details of Hawai'i High School Backgrounds," for the UH Community Colleges.

High school graduates data obtained from the State of Hawai'i Dept. of Education (public) and from the administrative offices of private high schools.

TABLE 4
 "GOING RATES" OF HAWAI'I HIGH SCHOOL GRADUATES
 INTO THE UNIVERSITY OF HAWAI'I SYSTEM 1/
 BY UH CAMPUS AND BY PUBLIC AND PRIVATE HIGH SCHOOLS
 FALL 1991 TO FALL 2001

CAMPUS AND FALL SEMESTER	TOTAL 2/		PUBLIC SCHOOLS		PRIVATE SCHOOLS	
	No.	Going Rate	No.	Going Rate	No.	Going Rate
TOTAL UH						
1991	4,469	37.6	3,623	38.2	846	35.3
1992	4,580	38.1	3,761	39.1	819	34.1
1993	4,494	38.5	3,634	39.0	860	36.5
1994	4,855	39.3	3,949	40.0	906	36.5
1995	4,829	38.8	3,982	39.9	847	34.6
1996	4,393	35.2	3,579	35.8	814	32.7
1997	4,510	36.6	3,661	37.4	849	33.6
1998	4,617	35.7	3,787	36.5	830	32.6
1999	4,692	36.0	3,844	36.9	848	32.7
2000	4,351	32.5	3,506	32.9	845	31.2
2001	4,102	31.7	3,369	32.6	733	28.0
UH at MANOA 3/						
1991	1,425	12.0	978	10.3	447	18.7
1992	1,470	12.2	1,059	11.0	411	17.1
1993	1,484	12.7	1,019	10.9	465	19.7
1994	1,546	12.5	1,077	10.9	469	18.9
1995	1,616	13.0	1,132	11.3	484	19.8
1996	1,279	10.2	874	8.7	405	16.3
1997	1,379	11.2	957	9.8	422	16.7
1998	1,341	10.4	924	8.9	417	16.4
1999	1,316	10.1	879	8.4	437	16.9
2000	1,278	9.6	826	7.7	452	16.7
2001	1,262	9.7	846	8.2	416	15.9
UH at HILO 3/						
1991	159	1.3	117	1.2	42	1.8
1992	241	2.0	196	2.0	45	1.9
1993	240	2.1	186	2.0	54	2.3
1994	293	2.4	227	2.3	66	2.7
1995	271	2.2	227	2.3	44	1.8
1996	263	2.1	209	2.1	54	2.2
1997	257	2.1	213	2.2	44	1.7
1998	239	1.9	199	1.9	40	1.6
1999	237	1.8	198	1.9	39	1.5
2000	235	1.8	202	1.9	33	1.2
2001	216	1.7	185	1.8	31	1.2
COMMUNITY COLLEGES 4/						
1991	2,885	24.3	2,528	26.7	357	14.9
1992	2,869	23.9	2,506	26.1	363	15.1
1993	2,770	23.7	2,429	26.1	341	14.5
1994	3,016	24.4	2,645	26.8	371	14.9
1995	2,942	23.7	2,623	26.3	319	13.0
1996	2,851	22.8	2,496	25.0	355	14.3
1997	2,874	23.3	2,491	25.5	383	15.2
1998	3,037	23.5	2,664	25.7	373	14.7
1999	3,139	24.1	2,767	26.5	372	14.4
2000	2,838	21.2	2,478	23.2	360	13.3
2001	2,624	20.3	2,338	22.6	286	10.9

TABLE 4 (cont.)

CAMPUS AND FALL SEMESTER	TOTAL 2/ No. Going Rate		PUBLIC SCHOOLS No. Going Rate		PRIVATE SCHOOLS No. Going Rate	
	Hawai'i CC					
1991	328	2.8	312	3.3	16	0.7
1992	295	2.5	282	2.8	13	0.5
1993	329	2.8	306	3.3	23	1.0
1994	369	3.0	352	3.6	17	0.7
1995	383	3.1	364	3.6	19	0.8
1996	262	2.1	253	2.5	9	0.4
1997	276	2.2	259	2.6	17	0.7
1998	303	2.3	285	2.7	18	0.7
1999	269	2.1	253	2.4	16	0.6
2000	261	2.0	247	2.3	14	0.5
2001	204	1.6	194	1.9	10	0.4
Honolulu CC						
1991	430	3.6	391	4.1	39	1.6
1992	460	3.8	426	4.4	34	1.4
1993	414	3.5	383	4.1	31	1.3
1994	471	3.8	440	4.5	31	1.2
1995	401	3.2	367	3.7	34	1.4
1996	416	3.3	375	3.8	41	1.6
1997	408	3.3	360	3.7	48	1.9
1998	466	3.6	428	4.1	38	1.5
1999	459	3.5	415	4.0	44	1.7
2000	418	3.1	377	3.5	41	1.5
2001	338	2.6	305	3.0	33	1.3
Kapi'olani CC						
1991	793	6.7	657	6.9	136	5.7
1992	823	6.8	652	6.8	171	7.1
1993	739	6.3	588	6.3	151	6.4
1994	795	6.4	631	6.4	164	6.6
1995	781	6.3	642	6.4	139	5.7
1996	752	6.0	605	6.1	147	5.9
1997	794	6.4	611	6.2	183	7.2
1998	828	6.4	661	6.4	167	6.6
1999	914	7.0	738	7.1	176	6.8
2000	725	5.4	581	5.4	144	5.3
2001	686	5.3	571	5.5	115	4.4
Kaua'i CC						
1991	173	1.5	172	1.8	1	<0.1
1992	164	1.4	163	1.7	1	<0.1
1993	152	1.3	142	1.5	10	0.4
1994	213	1.7	209	2.1	4	0.2
1995	190	1.5	189	1.9	1	<0.1
1996	181	1.5	178	1.8	3	0.1
1997	173	1.4	169	1.7	4	0.2
1998	144	1.1	135	1.3	9	0.4
1999	160	1.2	158	1.5	2	<0.1
2000	148	1.1	145	1.4	3	0.1
2001	145	1.1	137	1.3	8	0.3
Leeward CC						
1991	822	6.9	709	7.5	113	4.7
1992	704	5.9	620	6.4	84	3.5
1993	768	6.6	678	7.3	90	3.8
1994	751	6.1	653	6.6	98	3.9
1995	728	5.9	649	6.5	79	3.2

TABLE 4 (cont.)

CAMPUS AND FALL SEMESTER	TOTAL 2/ No. Going Rate		PUBLIC SCHOOLS No. Going Rate		PRIVATE SCHOOLS No. Going Rate	
	1996	777	6.2	685	6.9	92
1997	742	6.0	662	6.8	80	3.2
1998	776	6.0	687	6.6	89	3.5
1999	776	6.0	698	6.7	78	3.0
2000	679	5.1	604	5.7	75	2.8
2001	767	5.9	698	6.8	69	2.6
Maui CC						
1991	217	1.8	195	2.1	22	0.9
1992	266	2.2	244	2.5	22	0.9
1993	235	2.0	221	2.4	14	0.6
1994	266	2.2	249	2.5	17	0.7
1995	294	2.4	276	2.8	18	0.7
1996	307	2.5	278	2.8	29	1.2
1997	334	2.7	309	3.2	25	1.0
1998	346	2.7	325	3.1	21	0.8
1999	350	2.7	329	3.2	21	0.8
2000	435	3.3	382	3.6	53	2.0
2001	276	2.1	262	2.5	14	0.5
Windward CC						
1991	122	1.0	92	1.0	30	1.3
1992	157	1.3	119	1.2	38	1.6
1993	133	1.1	111	1.2	22	0.9
1994	151	1.2	111	1.1	40	1.6
1995	165	1.3	136	1.4	29	1.2
1996	156	1.2	122	1.2	34	1.4
1997	147	1.2	121	1.2	26	1.0
1998	174	1.3	143	1.4	31	1.2
1999	211	1.6	176	1.7	35	1.4
2000	172	1.3	142	1.3	30	1.1
2001	208	1.6	171	1.7	37	1.4
HAWAII STATE HS GRADUATES						
	No.	H%	No.	H%	No.	H%
1991	11,877	100.0	9,482	79.8	2,395	20.2
1992	12,015	100.0	9,615	80.0	2,400	20.0
1993	11,675	100.0	9,320	79.8	2,355	20.2
1994	12,353	100.0	9,870	79.9	2,483	20.1
1995	12,434	100.0	9,984	80.3	2,450	19.7
1996	12,482	100.0	9,995	80.1	2,487	19.9
1997 5/	12,312	100.0	9,784	79.5	2,528	20.5
1998	12,915	100.0	10,369	80.3	2,546	19.7
1999	13,017	100.0	10,425	80.1	2,592	19.9
2000	13,379	100.0	10,671	79.8	2,708	20.2
2001	12,945	100.0	10,330	79.8	2,615	20.2

- 1/ The "going rate" is the percentage of high school graduates from the State of Hawai'i entering the University of Hawai'i in the fall semester immediately following graduation from high school.
- 2/ Excludes home schoolers and students who received high school diplomas via the GED examination .
- 3/ First-time freshmen only.
- 4/ Includes all regular first-time students; excludes specials (early admits and concurrents).
- 5/ Private high school graduate count revised.

SOURCES: Report 1428, "High School Backgrounds of Entering Freshmen," for UH Manoa and UH Hilo;
Report 2510, "High School Backgrounds of Entering Students," for the UH Community Colleges.

TABLE 6D
NUMBER AND GOING RATE OF HAWAII STATE HIGH SCHOOL GRADUATES
ENTERING HONOLULU COMMUNITY COLLEGE, BY DISTRICT AND SCHOOL
FALL 1997 TO FALL 2001

DISTRICT AND HIGH SCHOOL	Fall 1997		Fall 1998		Fall 1999		Fall 2000		Fall 2001	
	No.	Going Rate	No.	Going Rate	No.	Going Rate	No.	Going Rate	No.	Going Rate
TOTAL	408	3.3	466	3.6	459	3.5	418	3.1	338	2.6
PUBLIC SCHOOLS	360	3.7	428	4.1	415	4.0	377	3.5	305	3.0
O'ahu, Regular	340	5.3	407	6.0	388	5.7	350	5.1	282	4.3
Honolulu	134	7.1	178	9.5	173	8.7	163	7.9	116	6.3
Anuenue 1/					1	16.7			1	25.0
Farrington	38	8.5	50	12.8	63	15.1	52	10.4	40	10.2
Kaimuki	16	5.8	20	6.9	16	5.3	23	7.8	9	3.8
Kaiser	11	3.8	13	4.6	6	2.4	16	5.9	2	0.7
Kalani	10	5.0	13	5.4	18	6.9	16	5.8	6	2.5
McKinley	36	9.5	58	16.7	50	12.3	35	8.2	37	9.6
Roosevelt	23	7.5	24	7.4	19	5.4	21	7.0	21	7.0
Leeward	150	4.3	185	4.8	184	5.0	153	4.1	134	3.6
Central	105	5.4	115	5.6	119	6.1	93	4.8	79	4.2
Aiea	23	7.0	22	6.5	22	7.4	18	5.6	15	4.6
Leilehua	6	2.0	3	1.0	2	0.6	6	1.6	15	4.2
Mililani	20	3.9	14	2.8	30	5.6	25	5.7	13	2.9
Moanalua	37	8.8	50	9.9	45	10.9	26	5.8	25	6.4
Radford	13	5.3	15	5.6	14	5.4	13	4.6	10	3.9
Waialua	6	4.2	11	8.0	6	5.2	5	5.4	1	1.0
Leeward	45	2.9	70	4.0	65	3.7	60	3.4	55	3.1
Campbell	3	1.0	13	3.6	12	2.9	14	3.8	12	2.8
Nanakuli	2	1.4	2	1.3	3	1.8	2	1.3	1	0.6
Pearl City	19	5.2	23	5.6	27	6.5	20	4.7	11	2.6
Wai'anae	7	1.9	7	1.9	12	3.3	9	2.2	9	2.6
Waipahu	14	3.6	25	5.4	11	2.8	15	3.5	22	5.1
Windward	56	5.6	44	4.0	31	2.8	34	3.2	32	2.9
Castle	31	9.3	20	4.8	9	2.3	13	3.6	15	4.0
Kahuku	3	1.2	6	2.1	7	2.5	4	1.6	3	1.2
Kailua	11	5.0	11	4.9	7	3.6	13	6.2	6	2.7
Kalaheo	11	5.4	7	4.0	8	3.4	4	1.7	8	3.3
O'ahu, Special							1	14.3		
Olomana							1	50.0		
Neighbor Islands	20	0.6	21	0.6	27	0.7	26	0.7	23	0.6
Hawaii	10	0.6	6	0.4	7	0.4	7	0.4	6	0.4
Hilo			1	0.3	1	0.3	1	0.2	2	0.6
Honoka'a	4	2.4	2	1.1	1	0.7	1	0.5	1	0.8
Ka'u	1	1.5								
Kohala			1	1.3						
Kona Waena	4	1.2	1	0.3	2	0.6	3	0.8	1	0.6
Pahoa	1	0.9					1	0.8	1	0.8
Waiakea			1	0.2	3	0.6	1	0.2	1	0.2
Maui County	6	0.5	6	0.5	10	0.8	10	0.8	11	0.8
Baldwin			1	0.2						
King Kekaulike 1/					1	0.4	1	0.4		
Lahaina Luna							1	0.6		
Lana'i			1	2.6	1	2.4	1	2.2	1	1.9
Maui	1	0.3	2	0.5	4	1.4	1	0.3	5	1.3
Moloka'i	5	5.0	2	2.1	4	3.5	6	4.5	5	4.8
Kaua'i	4	0.6	9	1.3	10	1.4	9	1.3	6	0.8
Kapa'a	1	0.4	2	0.8	6	2.4	5	1.9	1	0.4
Kaua'i	2	0.8	3	1.1	3	1.1	1	0.4	4	1.4
Waimea	1	0.6	4	2.2	1	0.6	3	1.6	1	0.5

TABLE 6D (cont.)

DISTRICT AND HIGH SCHOOL	Fall 1997		Fall 1998		Fall 1999		Fall 2000		Fall 2001	
	No.	Going Rate	No.	Going Rate	No.	Going Rate	No.	Going Rate	No.	Going Rate
PRIVATE SCHOOLS	48	1.9	38	1.5	44	1.7	41	1.5	33	1.3
O'ahu	44	2.0	36	1.6	44	1.9	41	1.7	33	1.4
Academy of the Pacific	2	7.1			1	2.4				
Damien	7	6.3	5	4.6	7	6.7	7	6.7	6	6.2
Hawai'i Baptist Academy	1	1.1								
Hawaiian Mission Academy			1	2.2	2	9.5			5	7.0
Kamehameha	11	2.4	11	2.5	19	4.2	12	2.7	4	0.9
Koolau Baptist	1	25.0			1	20.0			1	14.3
Lanakila Baptist			2	6.7			1	5.6	1	5.6
Lutheran High Sch Hawai'i	1	3.7					5	20.0	1	2.9
Maryknoll	2	1.5	2	1.5	2	1.6			2	1.5
Mid-Pacific Institute	4	2.1	2	1.2			3	1.3	1	0.5
Punahou			2	0.5					1	0.2
Sacred Hearts Academy	1	1.1	1	1.0	2	1.4	3	2.5	1	0.8
Saint Andrew's Priory									1	3.2
Saint Francis	3	4.2	3	4.2	1	1.3	1	1.1	2	2.5
Saint Louis	11	7.9	4	3.0	8	5.0	8	5.1	5	3.5
University			1	1.9	1	2.6			1	2.1
Varsity			2	7.1			1	5.0	1	3.6
Hawai'i	1	0.6								
Parker	1	3.0								
Maui County			2	1.5						
Ka'ahumanu Hou Christian			1	5.9						
Saint Anthony			1	1.7						
Unknown / Miscoded	3	NA								

1/ First graduates reported June 1999.

Note: The "going rate" is the percentage of graduates from a given high school entering Honolulu Community College in the fall semester immediately following graduation from high school.

SOURCES: State of Hawai'i Department of Education; Administrative offices of private high schools.