

**COURSE REGISTRATION REPORT**  
**UNIVERSITY OF HAWAI'I HONOLULU COMMUNITY COLLEGE**  
**SPRING 2001**

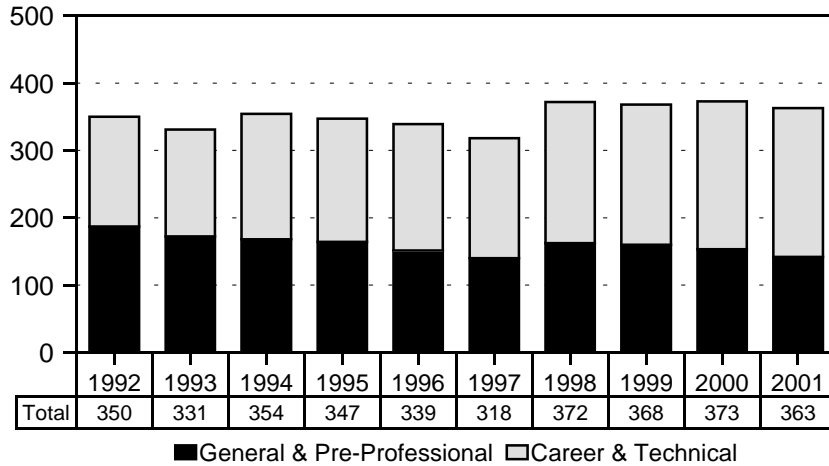
Institutional Research Office  
University of Hawaii  
August 2001

File Reference: Management and Planning Support Folder, Courses

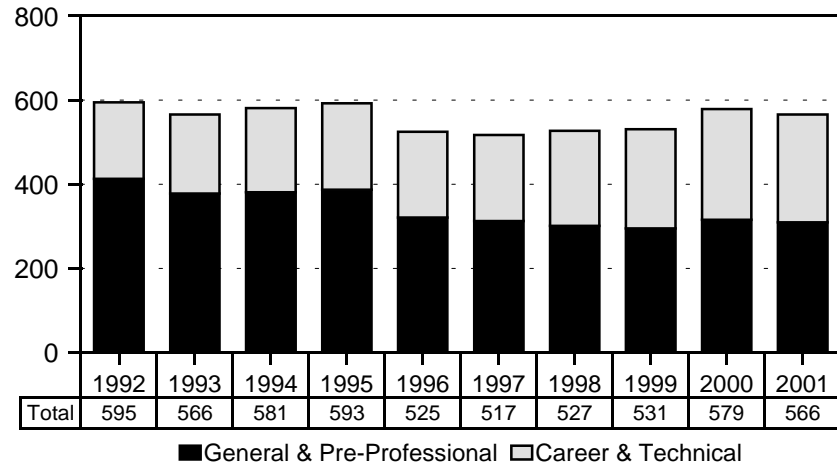
Reports available online at: <http://www.hawaii.edu/iro/maps.htm>

# Honolulu Community College, Spring Semesters 1992 - 2001

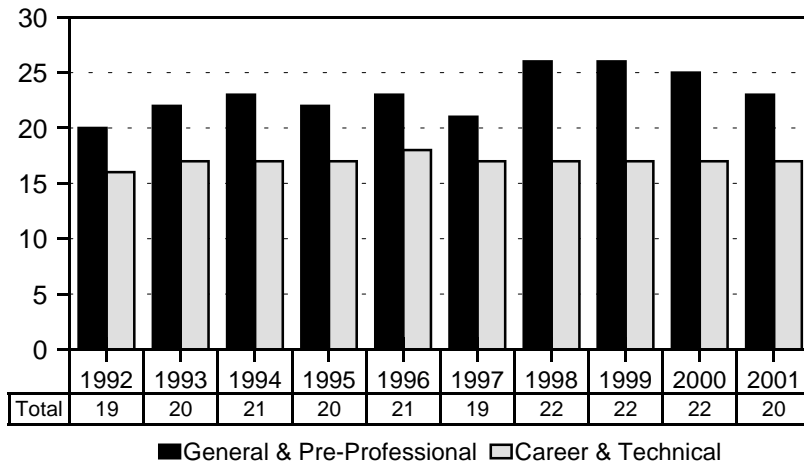
## Number of Courses



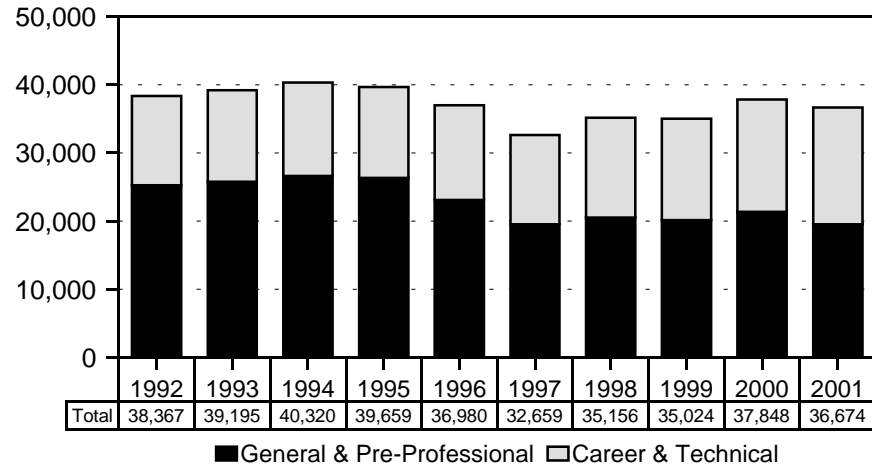
## Number of Classes



## Average Class Size



## Student Semester Hours



Note: General and Pre-Professional Instruction was formerly called General Academic Instruction.  
 Career and Technical Instruction was formerly called Occupational and Vocational Instruction.

APPENDIX B-1  
 COURSE REGISTRATION AND AVERAGE CLASS SIZE SUMMARY, BY COURSE OFFERING  
 HONOLULU COMMUNITY COLLEGE  
 SPRING 2001

COURSE OFFERING	COURSES	CLASSES 1/		SEM HOURS 2/	STUDENT REGIS	STUDENT SEM HRS	COURSE FTE	CONTACT HRS 3/	
		No.	Avg Size					Student	Instr
TOTAL .....	363	566	20	1,884	11,899	36,674	2,444	60,126	1,491
GEN & PRE-PROFESS INSTRUCTION 4/....	142	310	23	911	7,106	19,513	1,299	25,824	855
Humanities .....	59	141	23	432	3,179	9,256	617	9,547	407
Art .....	4	7	15	21	103	309	21	435	17
Asian Studies .....	2	2	24	6	48	144	10	144	6
Communications .....	2	1	21	3	22	67	4	67	3
English .....	14	48	25	136	1,184	2,926	195	2,958	122
English Language Institute .....	1	1	15	3	15	45	3	45	
English as a Second Language .....	8	11	21	38	227	816	54	816	35
Foreign Languages .....	7	12	17	48	209	836	56	836	48
Hawaiian .....	2	3	14	12	41	164	11	164	12
Japanese .....	2	4	22	16	89	356	24	356	16
Spanish .....	2	4	18	16	72	288	19	288	16
Tagalog .....	1	1	7	4	7	28	2	28	4
Hawaiian Studies .....	1	1	16	3	16	48	3	48	3
History .....	4	19	28	57	541	1,623	108	1,623	54
Music .....	2	3	20	9	59	177	12	177	9
Philosophy .....	6	14	21	42	295	885	59	919	44
Religion .....	3	7	20	21	140	420	28	420	21
Speech .....	4	14	21	42	297	891	59	990	43
Theater.....	1	1	23	3	23	69	5	69	3
Natural Sciences .....	54	110	25	314	2,789	6,925	461	12,710	291
Biological Sciences .....	8	14	18	36	251	666	44	1,018	36
Biology .....	1	5	21	15	106	318	21	347	17
Microbiology .....	2	4	12	10	47	116	8	196	8
Zoology .....	5	5	20	11	98	232	15	475	12
Chemistry .....	7	11	13	23	146	324	22	528	20
Mathematics .....	19	54	33	155	1,768	3,926	262	8,537	161
Meteorology .....	2	2	19	4	37	77	5	111	3
Oceanography .....	1	4	26	12	105	315	21	315	12
Physical Sciences .....	12	17	21	54	359	1,163	77	1,636	38
Astronomy .....	1	2	36	6	71	213	14	213	3
Geology & Geophysics .....	2	2	20	4	39	105	7	117	3
Physics .....	9	13	19	44	249	845	56	1,306	32
Quantitative Methods .....	1	1	12	3	12	36	2	36	3
Science .....	4	7	15	27	111	418	28	530	18
Social Sciences .....	21	47	22	142	1,047	3,139	208	3,328	137
American Studies .....	1	1	18	3	18	54	4	54	3
Anthropology .....	2	5	18	15	92	276	18	276	12
Economics .....	3	5	17	15	87	261	17	261	15
Family Resources.....	3	8	31	24	245	735	49	778	26
Geography .....	3	5	15	15	77	231	15	231	15
Political Science .....	3	4	17	12	67	201	13	201	9
Psychology .....	2	11	26	33	285	855	57	993	36
Social Science .....	2	1	17	4	23	67	4	75	
Sociology .....	2	7	22	21	153	459	31	459	21

APPENDIX B-1 (cont.)

COURSE OFFERING	COURSES	CLASSES 1/ No. Avg Size		SEM HOURS 2/	STUDENT REGIS	STUDENT SEM HRS	COURSE FTE	CONTACT HRS 3/ Student Instr	
Other General Academic .....	8	12	8	23	91	193	13	238	20
Aerospace Studies.....	2	4	4	6	16	25	2	40	4
Health, Physical Educ & Rec .....	1	1	25	2	25	50	3	50	2
Learning Skills .....	1	1	30	3	30	90	6	90	3
Military Science .....	3	5	1	11	6	14	1	16	8
Student Development .....	1	1	14	1	14	14	1	42	3
<b>CAREER &amp; TECHNICAL INSTRUCTION 5</b>	<b>221</b>	<b>256</b>	<b>17</b>	<b>973</b>	<b>4,793</b>	<b>17,161</b>	<b>1,145</b>	<b>34,302</b>	<b>636</b>
Business .....	11	27	21	83	566	1,746	116	1,772	86
Accounting .....	2	2	21	6	41	123	8	123	6
Business Law.....	1	1	19	3	19	57	4	57	3
Information & Computer Science .....	8	24	21	74	506	1,566	104	1,592	77
Health Services .....	2	4	29	12	116	348	23	391	14
Food Sci & Human Nutrition .....	1	3	31	9	92	276	18	276	9
Pharmacy 6/ .....	1	1	24	3	24	72	5	115	5
Public Services .....	57	70	17	191	1,273	3,553	237	4,369	185
Administration of Justice .....	12	14	23	43	322	967	64	1,125	51
Fire Science .....	15	15	23	46	347	1,034	69	1,464	50
Human Services .....	22	34	14	80	510	1,272	85	1,484	63
Education .....	18	30	13	68	410	1,019	68	1,220	55
Social Services .....	3	3	14	9	64	145	10	156	5
Social Work.....	1	1	36	3	36	108	7	108	3
Occupational Environ Safety Mgt.....	8	7	13	22	94	280	19	297	21
Technology .....	150	155	16	635	2,578	10,279	687	26,570	352
Aeronautics .....	9	11	17	73	182	1,166	78	4,258	3
Auto Body Repair & Painting .....	9	8	14	25	114	330	22	2,716	48
Automotive Mechanics Tech .....	11	10	15	67	182	945	63	3,708	
Aviation 7/.....	13	13	10	40	133	430	29	544	40
Blueprint Reading .....	1	2	26	6	51	153	10	153	6
Boat Maintenance & Repair .....	9	9	5	24	44	118	8	1,056	
Carpentry .....	1	1	4	11	4	44	3	92	5
Communication Arts .....	15	16	17	62	279	1,048	70	1,052	60
Comp, Elec, & Networking Tech .....	21	31	21	123	686	2,620	175	4,156	95
Cosmetology .....	11	8	17	46	139	821	55	1,332	20
Diesel Mechanics .....	5	4	23	13	94	282	19	2,236	12
Drafting .....	6	5	10	16	52	168	11	348	4
Electricity .....	5	4	20	21	80	395	26	905	10
Fashion Technology .....	10	8	15	24	122	345	23	493	18
Refrigeration & Air Conditioning .....	6	5	22	26	114	566	38	1,017	15
Sheet Metal & Plastics .....	7	7	11	22	74	240	16	470	12
Welding .....	11	13	18	36	228	608	41	2,033	4
Other Vocational .....	1	0		52	260	1,235	82	1,200	0
Work Cycle .....	1	0		52	260	1,235	82	1,200	0

1/ Excludes courses with catalog numbers 093, 193, 293 (Cooperative Education) and 099, 199, 299 (Directed Studies).

2/ Excludes courses with catalog numbers 099, 199, 299 (Directed Studies).

3/ Contact hours (student and instructor) understated. Data not available for some classes because they meet on an "hours arranged" basis.

4/ Formerly called General Academic Instruction; changed to General and Pre-Professional Instruction.

5/ Formerly called Occupational & Vocational Instruction; changed to Career and Technical Instruction.

6/ Added in Spring 2001.

7/ Added in Fall 1998.

SOURCE: Computer Report 3011: "Course Registration Summary Report" and  
Computer Report 3011C: "Number of Classes and Average Class Size."

APPENDIX B-2  
NUMBER OF CLASSES AND AVERAGE CLASS SIZE 1/  
HONOLULU COMMUNITY COLLEGE  
SPRING 1997 TO SPRING 2001

	SPRING 1997			SPRING 1998			SPRING 1999			SPRING 2000 2/			SPRING 2001		
	Classes No.	% Chg	Avg Size	Classes No.	% Chg	Avg Size	Classes No.	% Chg	Avg Size	Classes No.	% Chg	Avg Size	Classes No.	% Chg	Avg Size
TOTAL .....	517	-1.5	19	527	1.9	22	531	0.8	22	579	NA	22	566	-2.2	20
GENERAL & PRE-PROF INST 3/.....	313	-2.5	21	301	-3.8	26	295	-2.0	26	316		25	310	-1.9	23
Humanities .....	124	2.5	23	134	8.1	27	132	-1.5	25	144		24	141	-2.1	23
Natural Sciences .....	100	-20.6	20	104	4.0	27	93	-10.6	32	108		30	110	1.9	25
Social Sciences .....	42	-6.7	26	43	2.4	26	44	2.3	25	51		23	47	-7.8	22
Other General .....	47	62.1	13	20	-57.4	10	26	30.0	7	13		9	12	-7.7	8
CAREER & TECHNICAL INST 4/.....	204	0.0	17	226	10.8	17	236	4.4	17	263		17	256	-2.7	17
Business .....	19	18.8	22	23	21.1	21	23	0.0	21	30		20	27	-10.0	21
Health Services .....	5	0.0	29	3	-40.0	38	3	0.0	39	4		27	4	0.0	29
Public Services .....	69	9.5	18	73	5.8	17	75	2.7	18	73		18	70	-4.1	17
Technology .....	111	-5.9	15	127	14.4	16	135	6.3	16	156		16	155	-0.6	16

1/ Number of classes and average class size exclude courses with catalog numbers 093, 193, 293 (Cooperative Education), and 099, 199, 299 (Directed Studies).

2/ Beginning in Spring 2000, includes off-campus credit classes. Percentage change for Spring 2000 is therefore not comparable with prior year.

3/ Formerly called General Academic Instruction; changed to General and Pre-Professional Instruction.

4/ Formerly called Occupational & Vocational Instruction; changed to Career and Technical Instruction.

SOURCE: Computer Report 3011C: "Number of Classes and Average Class Size."

APPENDIX B-3  
STUDENT SEMESTER HOURS (SSH) AND COURSE FTE  
HONOLULU COMMUNITY COLLEGE  
SPRING 1997 TO SPRING 2001

	SPRING 1997			SPRING 1998			SPRING 1999			SPRING 2000 1/			SPRING 2001		
	SSH No.	COURSE % Chg	FTE	SSH No.	COURSE % Chg	FTE	SSH No.	COURSE % Chg	FTE	SSH No.	COURSE % Chg	FTE	SSH No.	COURSE % Chg	FTE
TOTAL .....	32,659	-11.7	2,181	35,156	7.6	2,344	35,024	-0.4	2,335	37,848	NA	2,520	36,674	-3.1	2,444
GENERAL & PRE-PROF INST 2/..	19,543	-15.5	1,305	20,540	5.1	1,367	20,155	-1.9	1,343	21,367		1,423	19,513	-8.7	1,299
Humanities .....	8,633	-13.6	575	9,788	13.4	651	9,352	-4.5	623	9,763		651	9,256	-5.2	617
Natural Sciences .....	5,965	-27.3	399	6,953	16.6	463	7,165	3.0	478	7,828		521	6,925	-11.5	461
Social Sciences .....	3,225	-15.0	216	3,443	6.8	230	3,316	-3.7	220	3,502		233	3,139	-10.4	208
Other General .....	1,720	50.3	115	356	-79.3	23	322	-9.6	22	274		18	193	-29.6	13
CAREER & TECHNICAL INST 3/..	13,116	-5.2	876	14,616	11.4	977	14,869	1.7	992	16,481		1,097	17,161	4.1	1,145
Business .....	1,284	17.3	85	1,601	24.7	107	1,480	-7.6	99	1,880		125	1,746	-7.1	116
Food Services .....	10	-95.5	1	0	-100.0	0	0		0	0		0	0		0
Health Services .....	438	-11.0	29	345	-21.2	23	354	2.6	24	318		21	348	9.4	23
Public Services .....	3,422	3.2	229	3,661	7.0	244	3,723	1.7	247	3,799		252	3,553	-6.5	237
Technology .....	7,962	-8.6	532	8,995	13.0	602	9,011	0.2	602	10,126		675	10,279	1.5	687
Other Vocational .....				14		1	301	2050.0	20	358		24	1,235	245.0	82

1/ Beginning in Spring 2000, includes off-campus credit classes. Percentage change for Spring 2000 is therefore not comparable with prior year.

2/ Formerly called General Academic Instruction; changed to General and Pre-Professional Instruction.

3/ Formerly called Occupational & Vocational Instruction; changed to Career and Technical Instruction.

SOURCE: Computer Report 3011: "Course Registration Summary Report."